

IPT384

Electric-focus Network Online Thermal Camera

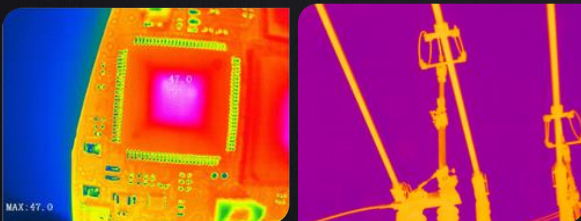


Introduction

The IPT series is a compact electric-focus network on-line thermal camera. The applied uncooled focal plane infrared detector is used for accurate temperature measurement, featured with excellent performance and stable operation. IPT thermal camera is based on a standard Gigabit Ethernet interface with fully-featured terminal software and an easy-to-use SDK package. Multiple configurations are optional, flexible and easy to integrate.

Features and Benefits

- IR detector 384x288, high performance thermal imaging
- Gigabit Ethernet output, networkable, easy to use and flexible
- Free professional display control software and SDK development kit
- Provide SDK development package for LINUX and WINDOWS system, plenty of interface, easy to integrate
- Support auto focus and motor location for more on-site application



Application

- Industrial automation
- Scientific research
- Integration of UAV

Specifications

Model	IPT384
Thermographic	
Detector type	VOx
Detector resolution	384×288
Pixel size	17μm
Wavelength range	8μm to 14μm
NETD	≤60mK
Lens	15mm, 25° x 19°
Detail enhancement	Supported
Noise reduction	2D/3D noise reduction
Color palettes	8
Temperature measurement parameters	
Measurement range	-20°C-150°C, -20°C-350°C or -20°C-150°C, 100°C-650°C (Alternative)
Measurement accuracy	±2°C or ±2% (whichever is greater)
Cold/hot spot tracking	Supported
Full-screen point temperature measuring	Supported
Temperature query and export	Supported
Imaging	
Video compression	IR video (compressed) without full-screen temperature information
Image coding format	IR JPG images with full-screen temperature information
Code stream	Support compressed video
Protocol and storage	
Network protocol	RTSP, UDP, HTTP, TCP/IP, Onvif
System function	
Language version	Chinese/English
Browser	Supported
Hardware interface	
Network interface	Network reset port, power indicator, power interface (tightening), RS485, alarm output IO and Ethernet port
Alarm interface	1-channel input and 1-channel output
Other interface	M3 screw thread (for 4 sides)
Environmental	
Operating temperature range	-10°C to 50°C; -20°C to 60°C (Alternative)
Operating humidity	≤ 95%, non-condensing
Physical	
Product size	88mm×60mm×60mm (lens included and external interface excluded)
Net weight	410g



Innovative Technologies
An ISO 9001 : 2015 Company

TAURUS POWERTRONICS PVT LIMITED

Corp. Off.: No. 26, "Mahadimane", 12th Main, 1st Block, Rajajinagar, Bengaluru - 560 010, INDIA, Tel : + 91 80 2301 2301, Mob.: +91 95827 12715
Email : info@tauruspowertronics.com, enquiry@tauruspowertronics.com, Tollfree : 1800 425 2112, WhatsApp : +91 73496 44344
Sales & Service Off.: No. 648/54, KLE College 2nd Block, Rajajinagar, Bengaluru - 560 010, INDIA , Tel : + 91 80 2352 2136/74

BENGALURU

DELHI

KOLKATA

MUMBAI